



Chain Slings and Accessories

Offering Safety Material

Eye Safety Hooks

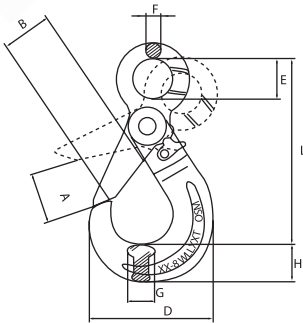
- Forged Alloy Steel (Quenched and Tempered) material
- Use with Alloy Chain Grade 80 and Wire Rope for lifting application
- Embossed with OSM, Traceability Code, WLL & Product Code
- Working Load Limit at 4:1
- Proof Load at 2.5 times of Work Load Limit
- Fatigue rated at 1.5 times the WLL with 20,000 cyclic test
- Lock Latch provides Automatic Locking when Hook is loaded

Clevis Safety Hooks

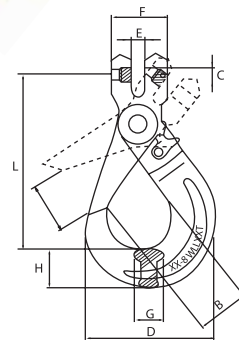
- Forged Alloy Steel (Quenched and Tempered) material
- Use with Alloy Chain Grade 80 and Wire Rope for lifting application
- Embossed with OSM, Traceability Code, WLL & Product Code
- Working Load Limit is 4:1
- Proof Load is 2.5 times of Work Load Limit
- Fatigue rated at 1.5 times the WLL with 20,000 cyclic test
- Clevis opening only allows correct size of Chain to be fitted
- Lock Latch provides Auto-Locking when Hook is loaded



Type: HES



Type: HCS



Alloy Eye Safety Hook Grade 80 Type: HES

Product Code	Size mm	L mm	A mm	B mm	D mm	E mm	F mm	G mm	H mm	Weight kg	WLL 4:1 Ton
HES 006	6	110	29	28	71	21	10	15	20	0.50	1.2
HES 007	7-8	136	34	36.5	88	25	11	20	24	0.80	2
HES 010	10	167	44	41.5	108	32	13	26	30	1.40	3.2
HES 013	13	207	52	52.5	140	40	16	30	38	2.70	5.4
HES 016	16	252	60	64	171	52	21	40	48	5.60	8.0
HES 018	18-20	282	90	89.5	200	64	23	48	57	8.50	12.5
HES 022	22	319	80	88	204	70	24	49	63	11.20	15.0

Alloy Clevis Safety Hook Grade 80 Type: HCS

Product Code	Size mm	L mm	A mm	B mm	C mm	D mm	E mm	F mm	G mm	H mm	Weight kg	WLL 4:1 Ton
HCS 006	6	99.5	37	28	8	71	9	32	15	20	0.45	1.2
HCS 007	7-8	123	55	36.5	9.5	88	10	36.5	21	24.5	0.85	2
HCS 010	18	148	70	42	14	108	12	47	26	30	1.45	3.2
HCS 013	13	187	73.5	52.5	16.5	140	15	60	30	40	2.90	5.4
HCS 016	16	226	97	64.5	21	171	18	72	39	50	5.60	8.0
HCS 020	18-20	255	116	89.5	25	200	22	86	45	57	6.50	12.5
HCS 022	22	265	88	80	28.2	204	25.5	98	52	65	16.0	15.0