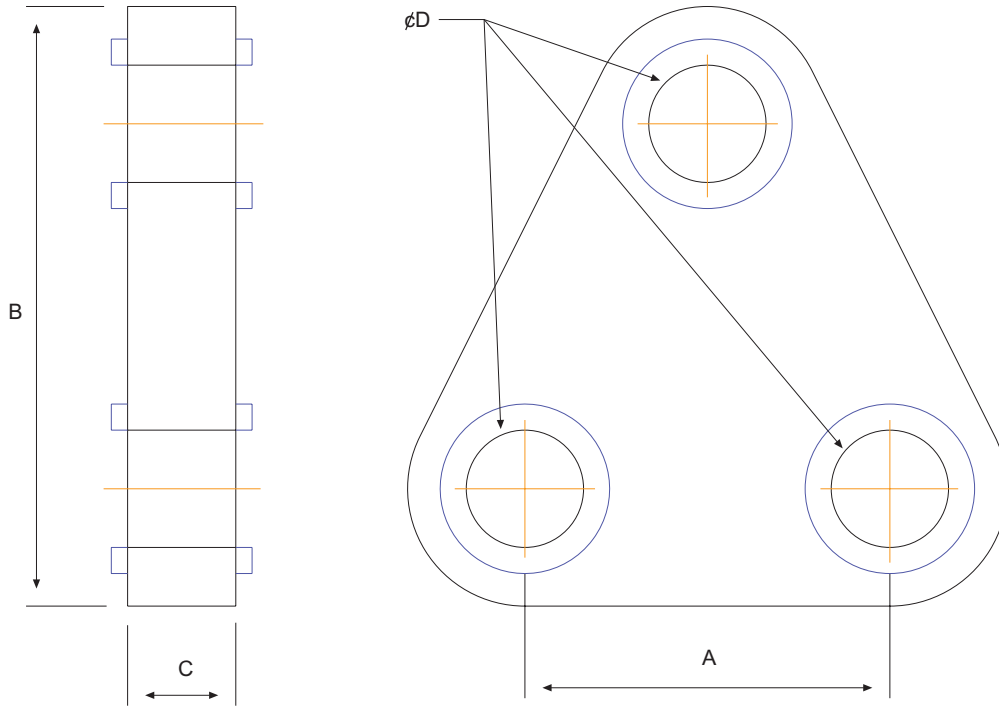


## Tri - Plate



CODE PLA	Ø D (mm)	A (mm)	B (mm)	C (mm)	Tension Proof Load (kN)	Weight (kg)
DP-01	22	53	113	18	64	1
DP-02	25	59	133	22	93	1.8
DP-03	28	65	151	28	128	12.8
DP-04	32	71	165	30	167	3.6
DP-05	35	79	189	35	186	5
DP-06	40	85	196	35	235	6.4
DP-07	40	96	223	45	265	8.2
DP-08	45	104	231	45	334	11
DP-09	55	120	275	60	491	20.4
DP-10	60	132	311	75	687	38.4
DP-11	70	150	329	80	834	40
DP-12	75	165	370	90	1079	57
DP-13	85	185	421	110	1668	83
DP-14	100	220	502	130	2354	163
DP-15	110	234	556	135	2943	200