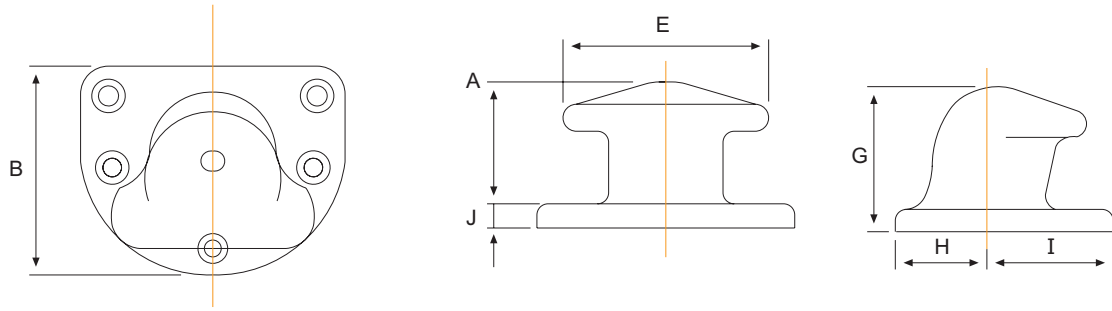
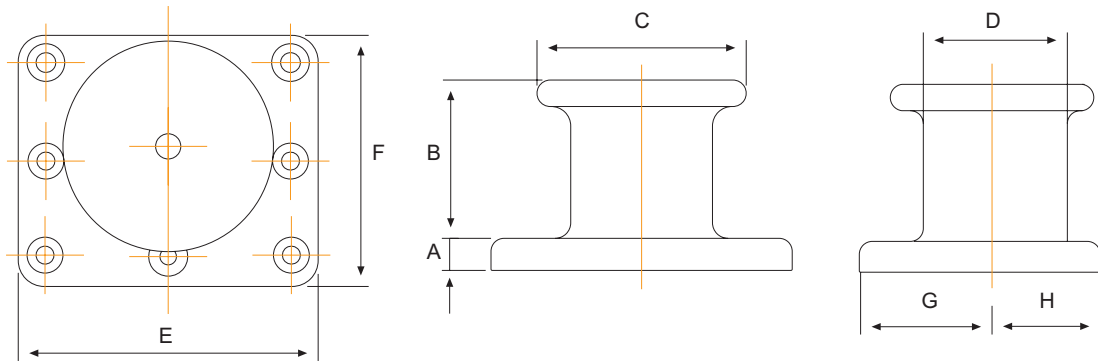


## Kidney Bollard



Kidney Bollard							
Dimensions (mm)							
Ref	TYPE	K15	K20	K30	K50	K70	K100
A		225	305	350	380	410	435
B		405	455	540	615	640	750
E		350	400	500	550	600	700
G		295	350	400	450	490	525
H		165	190	220	245	245	300
I		240	265	320	370	395	450
J		40	45	50	70	80	90
No. of Bolts		5	5	5	6	7	7
Dia of Bolts		30	30	36	42	42	48
Pull in Tons		15	20	30	50	70	100

## Pillar Bollard



Pillar Bollard							
Dimensions (mm)							
Ref	TYPE	P15	P20	P30	P50	P70	P100
A		40	50	50	60	70	80
B		280	280	320	350	380	405
C		300	320	390	430	500	580
D		200	220	260	300	350	400
E		390	400	540	590	740	760
F		390	400	540	490	615	660
G		-	-	-	295	345	380
H		-	-	-	195	276	280
No. of Bolts		4	4	4	7	7	7
Dia of Bolts		30	36	36	42	42	48
Pull in Tons		15	20	30	50	75	100